



Please keep this for future use

This document is:

A - information to help you get ready for your Murphy Bed installation - e.g. move switches and trunking etc.

B - detailed operation instructions and warnings for safe use of your products.

You may need to refer to more than one section - e.g. for Tuckin Bunk / Loft Beds 1, 2, 3, 4, 9 & 9.a.

A - Murphy Bed Pre-installation Information

Get ready for installation of your Murphy Bed

B - Product Instructions and Advisories

Contents:

1. **WARNINGS General**
2. **Maintenance - all products**
3. **Operation of all Murphy bed models (including Tuckin Bunk Beds/Loft Beds)**
4. **Murphy Bed mattresses**
5. **Slumberdesk – operation of the desk**
6. **Slumbershelves**
7. **Slumber TV**
8. **Remote control Murphy Bed (electric opening)**
9. **All Bunk beds / double decker beds / high beds:**
 - a. **Tuckin Bunk Beds / Loft Beds (Murphy beds)**
 - b. **Slumbersofa Duo**
 - c. **Fixed Bunk Beds / Loft Beds (all models except Tuckin and Duo)**
 - d. **Mattress Size Chart for Fixed Bunk Beds / Loft Beds**
10. **Tables & Chairs (including Wall Mounted Tables)**
11. **Sofa Beds**
12. **Storage Beds**
13. **Outdoor Tables & Chairs**
14. **Paper Products**
15. **Mattresses**

Outdoor Furniture

Unless otherwise specifically stated in writing, Spaceman products are not suitable for use outdoors and should be kept cool and dry at all times. As an example, a balcony, whether with zip line or not, remains an outdoor space. The heat and humidity will affect products.

Specialised and hardy products must be used in these settings. SG weather can be very harsh.

We do have a range of outdoor pieces if you wish to keep a table, chairs or sofa outdoors / on a balcony etc.

Customer Service:

Email: service@spaceman.odoo.com

Whatsapp: 8742 4575 (messages only)

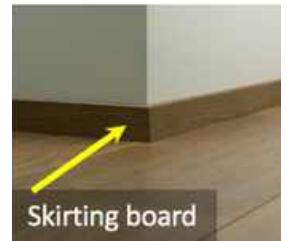
Telephone: (65) 65 272 271

Correspondence: 259 Lavender Street, Singapore 338793

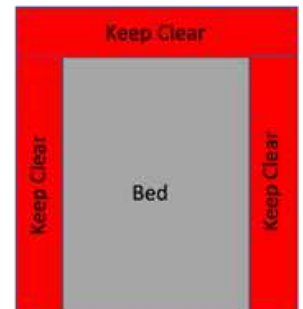
A - Spaceman Murphy bed pre-installation information **KEEP THESE WARNINGS**

IMPORTANT - IF YOU HAVE PURCHASED A MURPHY BED PLEASE READ THIS NOW - YOU MAY WISH TO DO SOME PREPARATION BEFORE YOUR INSTALLATION

1. Your building management may require you to obtain a permit for the delivery and/or installation.
2. The bed will be transported to your home, it will be unpacked and assembled. This process takes 2-3 hours. There needs to be sufficient space in the room for the bed to be assembled where it is to be installed.
3. The bed must be fixed to the wall. A concrete or brick wall is preferable. A partition wall may be OK but it is advisable to add reinforcement where the bed will be attached. We can provide information on how the attachment will be made if you or your contractor require it. The bed can be detached again if necessary in the future to access behind the bed, or if you move home.
4. If you have a skirting board the bed will rest against it, but that means there will be a gap behind the bed above the skirting board. We do not, and for safety, cannot cut into the frame of the bed to wrap around a skirting board. The back of the bedframe must be straight. Therefore if you have a skirting board you may prefer to remove it before we arrive if you do not want a gap, however, this is not necessary for the installation, and having a gap for the air to circulate can be beneficial in humid environments.
5. The bed must rest, at least at the bottom of the frame, against a solid stable surface and be completely straight. That could be the wall, or the skirting board. There must be nothing, such as cabling or plugs, protruding from the wall behind the bed that would prevent it from resting against the wall or skirting otherwise it cannot be safely installed.



6. Please note that our installers cannot cut holes into the cabinetry onsite.
7. We need to be sure the bed is straight, and to drill and attach it to the wall, and so there cannot be anything immediately to the sides and above the bed when we are carrying out the installation (see diagram). If you are installing any other furniture to the sides or above the bed it should be done after installation of the bed.



8. Wall beds are made of strong materials, and so are heavy. During the installation process a large number of boxes will need to be brought in, and to position the bed it will need to be slid on the floor for final positioning. Whilst our contractors will be as careful as they can, if you are doing renovation work we recommend installing the bed before the walls, and floor are finished since some marks, such as a wall in a narrow corridor, or on the floor where the bed is slid into position may be unavoidable.
9. If you are installing a Slumbershelves you will need to provide any cables you wish to be used inside the bed at the beginning of the installation. A power cable and coaxial cable are already inserted, you can add up to one more cable and replace one or both the existing cables if you wish but this needs to be done before the bed is installed. For Slumbershelves if you wish the cables to exit from a hole at the back of the bed you will need to make the installers aware of this before the bed is installed.
10. We need to give our contractor fair warning of changes to the installation date and so we ask that if you do need to re-schedule it is done at least 48 hours before the scheduled installation. Any changes made less than 48 hours before the scheduled installation will incur a late cancellation fee which may be as much as the full installation cost.

IMPORTANT: The mattress will be required by the installers for testing. If using your own mattress ensure it is present at installation. If not you should not use the bed. An additional charge will be required for the installers to make a return trip to attend to the bed when the mattress is there.

B - PRODUCT INSTRUCTIONS AND ADVISORIES

Please do follow the directions below to maximise your enjoyment of your space saving furniture. **IMPORTANT:** read these instructions thoroughly before using your Spaceman products - keep them for future reference. They are subject to change at any time - up to date version can be found on our website: spaceman.com/instructions.

1. WARNINGS: General - Risk of Injury

- **MAINTENANCE:** Periodically verify that the mounting systems are operating well and secure. Monitor the fixings (assembly accessories/fastenings such as screws, wall bolts etc.) on the products at least every three months to ensure they remain tight and secure. If the screws seem to loosen please tighten them.
- Pistons do not require any maintenance but should you hear a hissing sound coming from either piston, or there be any sign of oil leakage please contact Spaceman immediately for advice.
- **DO NOT UNSCREW OR INTERFERE WITH ANY ELECTRICAL PART. SEE ELECTRICAL WARNINGS BELOW FOR REMOTE CONTROL BED AND SOFA BED.**
- Always follow the manufacturer's instructions.
- Do not remove any safety device, protection or warning and danger labels.
- Do not allow children to play with mechanisms or open/close products.
- Ensure people animals and objects are not in the movement area of the products when opening and closing.
- Pay close attention when children are using the products. For reasons of safety, assembly must be performed when no children are present.
- **NEVER** make any changes that could compromise the stability of the structure.
- It is forbidden to modify or replace accessories, hardware or parts of the mechanism/products unless authorised by the manufacturer.
- Any replacement accessories, hardware or parts required should be ordered from Spaceman/the manufacturer; any use of parts that do not comply with the manufacturer's construction directives is prohibited: this can be a danger and damage the mechanism.
- Do not use any product if any structural part is damaged, defective, broken or missing. Replace chipped or cracked glass tops or doors.
- Do not use products improperly (don't climb/walk on the shelves/beds/cabinets, don't hang on doors, hanging units, don't overload tables, cabinets and drawers and so on).
- All cabinetry / Murphy beds / kids beds/ wall mounted tables etc. must be securely attached to the wall unless otherwise stated in writing by Spaceman.
- Any plastic used to pack the products can represent a choking or suffocation hazard for children.
- Ventilation of the room is necessary in order to keep the humidity low and to prevent mould in and around products.
- Do not hit products with hard or sharp objects especially glass.
- Direct and prolonged exposure to sunlight or intense heat sources or aggressive chemicals, and the use of unsuitable detergents represents a source of danger and may cause damage for which the manufacturer cannot be held responsible. **NOTE:** Any slight colour variations in the materials will fall within the natural tolerance limits for the product.
- Never leave naked flames or other strong sources of heat, such as lights, electric or gas fires or heaters, close to a product.
- Unless specifically stated in writing products are not suitable for use outdoors, do not put them into contact with water and never place hot items on the surfaces.
- Not water resistant. Dry thoroughly after cleaning. Never use solvent-based products like trichloroethylene, acetone, ammonia, etc.



2. Maintenance - All Products

(also see the section herein on your specific product)

WALL MOUNTED FURNITURE

IMPORTANT: Monitor the fixings both on the product (bed etc.) itself (and any cabinetry), and their wall/anchor fixings, at least every three months to ensure they remain tight and secure. If the screws seem to loosen please tighten them. Any concerns contact Spaceman immediately for advice.

For the fixings on the bed panels on Murphy beds you need an Allen key size 4 (see photo) if you do not have one please contact us and we will send one to you free of charge.

If a product makes sounds from the moving parts when opening or closing this is quite normal, feel free to oil them or use a lubricant such as WD40.

Pistons do not require any maintenance but should you hear a hissing sound coming from a piston, or there be any sign of oil leakage please contact Spaceman immediately for advice.

Always follow the manufacturer's instructions. You should check regularly that all assembly fastenings are properly tightened for all products.

We do offer a (chargeable) service visit if you would like our technicians to carry out a maintenance inspection for you.

In addition to the above:

TABLES

Generally tables have inbuilt levelling features you can use to re-level the top / extensions/legs especially if you move the table to a new place (floors are very often uneven).

Do not leave table tops wet, as this can allow liquids to penetrate the finishes. Especially with extension panels and panels that fit together and open, as capillary action can trap liquids.



OUTDOOR - see below

SOFA BEDS

Six Monthly Maintenance - Clean up the mechanism from dust and lubricate all mechanical joints with a silicone spray lubricant.

ELECTRIC SOFA BED:

Lubricate hinges annually with High Density Oil avoiding drips which may soil the fabric.

Sounds originating from moving metal parts are normal in the absence of adequate lubrication.

STORAGE BEDS

Check the pistons, frame, and all moving parts every 3-6 months for signs of wear or damage. If you notice any issues, contact customer support or a professional for repairs. Ensure no debris, dust, or dirt accumulate around the pistons or lifting mechanism, as this may interfere with smooth operation.

3. Operation of all Murphy bed models (including Tuckin Bunk Beds/Loft Beds):

Your bed can be opened using the legs, or on some models a built in handle on the front. The weight of the mattress affects how the bed opens (for example if you use a heavy mattress the bed may open faster).

For beds with soft open system - Simply pull the bed forward until a point where it can continue without assistance and the bed will lower itself to the ground. When opening the bed always pull the handle, or the leg and try to keep it in line (don't bend it outward), never pull using the front panel.

The soft open system is controlled but please consider the following:

- The bed will land on the floor, if you have special flooring that could become marked over time we recommend placing a rug or some other protection where the feet of the bed will land to protect the floor.
- Use the straps provided to secure the mattress and bedding in place when closing the bed. The straps need not be used when the bed is being slept on and can be easily opened and closed when required. Do not force the bed to close, pillows and bulky bedding should be removed if the bed does not fully close easily.
- In the event of any mechanical problem immediately contact Spaceman and refrain from opening and closing the bed.

WARNINGS: All Murphy beds [INCLUDING TUCKIN BUNK BEDS/LOFT BEDS]

- **MATTRESS REQUIRED do not operate without a mattress inside - the mechanism will be very strong and the bed could close quickly and unexpectedly, creating a risk of injury. A mattress for the bed is mandatory at the time of installation (make sure your mattress is ready).**
- **Your bed (and any cabinetry) must be securely fixed to the wall or another appropriate anchor approved by Spaceman at all times - a professional should do this as ordinary screws would not be sufficient.**
- Before you fix to the wall you must check that the fixtures are suitable for the wall type, e.g. concrete and plasterboard need different fixtures.
- **Monitor the fixings both on the bed itself (and any cabinetry), and the wall/anchor fixings, at least every three months to ensure they remain tight and secure. If the screws seem to loosen please tighten them.**
- **OPENING:**
 - No one must stand in front of the bed.
 - Keep feet and other body parts clear from any desk when it lowers to the floor – there is a risk of trapping a foot or other body part.
 - **DESKS:** ensure that there is nothing on the desk which is above the height of the back panel of the desk (approximately 10cm). [Except horizontal single & supersingle which have 20cm limit].
 - **FOLDING DESK:** ensure the bed is locked closed before opening and closing the desk. When opening the desk ensure the desk supports are locked in the open position.
- **CLOSING:** ensure you and no-one else is in danger of trapping hands or fingers in the bed.
- Never stand on, or apply force to, the front panel(s) of the bed.
- Maximum weight capacity for:
 - Murphy beds is 200kg (including mattress) unless stated otherwise;
 - desks is 30kg (15kg for Slumberdesk Junior).



4. Murphy Bed Mattresses

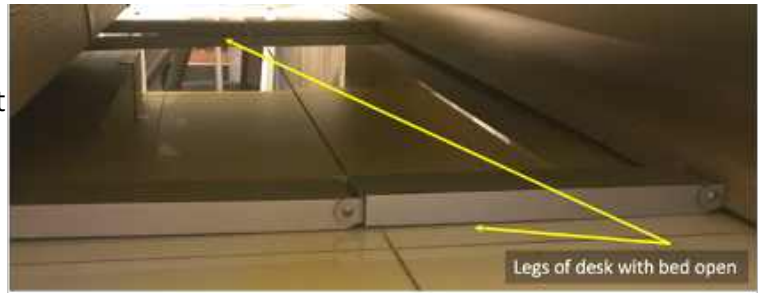
Our mattresses are designed for use with our products. Whilst you are not obliged to use our mattress if you choose to use your own you should be aware it may affect the operation, safety and any warranty on the product.

IMPORTANT: ensure your mattress is within the maximum/minimum dimensions AND weight stipulated by Spaceman, size information is stated below for bunk beds, and for other products is available upon request.

IMPORTANT: The mattress will be required by the installers for testing, if you are using your own mattress please make sure it is present at the time of installation. If not you should not use the bed. An additional charge will be required for the installers to make a return trip to attend to the bed when the mattress is there.

5. Slumberdesk – operation of the desk

Whilst you may place protection on the floor where the feet of the bed land please note that the floor where the legs of the desk lie (see first picture) must be flat otherwise it can affect the operation of the desk. If the desk does not position correctly when you close the bed, then the item you have placed there needs to be adjusted.



IMPORTANT: When opening the bed for all Slumberdesk models where the desk sits below the bed, you must make sure that there is nothing (1) on the desk which is above the height of the back panel of the desk (approximately 10cm - see second picture [Except horizontal single & supersingle which have 20cm limit]) or (2) on the floor under the bed when opening the bed – especially your feet. Otherwise the desk will become damaged. For example close any laptops, lay books flat. With all Slumberdesk models keep in mind that the weight you place on the desk will affect the operation of the bed/desk and so try to avoid too many heavy items since that will make the desk/bed heavier to lift.



6. Slumbershelves

IMPORTANT: Take care when revolving the bed to ensure the right hand door (when facing the bed) is completely open, and the left hand door is completely closed. Do revolve the bed cautiously to avoid knocking items off the shelves.

When the TV option has been specified the Slumbershelves comes with a coaxial cable and power cable inserted into the cable channel, if you wish to use any other cables they must be inserted into the cable channel prior to installation of the bed so please inform the installers at the beginning of the installation. The maximum TV size is 73cm high x 144cm wide. The weight you put on the shelves will affect the operation of the bed, therefore do not overload the shelves with heavy items such as books, particularly if there is also a TV which will also contribute to the loading.

7. Slumber TV

IMPORTANT: The TV mount bracket is not supplied. You must use a TV mount that secures the top of the TV so that it does not detach when the bed is open (45 degrees from closed position). Common TV mounts “hang” the TV on the top of the mount and would NOT be suitable.

Slumber TV comes with an inbuilt cable management system. The maximum TV weight is 20KG.

8. Remote control Murphy bed (electric opening)

WARNING: If you have a remote control bed please be aware the bed must NEVER be operated manually whilst the electric motor is attached.



In the event you wish to operate the bed manually (without remote control/electric motor) such as in a power cut, you must disconnect the pins which attach the motor to the bed frame. This is done by removing the two retaining clips and pulling the pins out (see picture) which can be accessed from under the bed when closed, or at the back of the bed when open.

Without the motor the bed will operate normally using our standard soft open system.



MAXIMUM WARNING

ELECTRICAL PRODUCTS

- In case of failure or malfunction of the device, stop use immediately, unplug and consult Spaceman. **! Danger of fire, short-circuit or electric shock!**
- Do not operate the product, use the remote control and/or unplug the unit with wet hands. **! Danger of electric shock or injury!**
- Never disassemble the device or modify it. **! Danger of fire or injury!**
- Do not allow children to operate or play with the product and the remote control. **! Risk of injury!**
- People with severe disability should take extreme care or operate only with supervision. **! Risk of injury!**

• ELECTRICAL PRECAUTIONS

- Ensure the plug is inserted completely into the power socket. **! Risk of short-circuit and/ or fire!**
- When removing plug from power socket, ensure the plug is handled. Do not unplug by pulling the cable. **! Risk of short-circuit, electric shock or fire!**
- In case of interruption of power, switch off the device and unplug it. **!Risk of fire!**



• WARNINGS / PRECAUTIONS

- Do not operate the product wearing wet garment. **! Risk of injuries or electric shocks!**
- Do not use the product if wet. **! Risk of injuries or electric shocks!**
- Do not use with a different voltage from what is indicated in the label and do not insert the plug in multiple converters. **! Risk of fire or short-circuit!**
- Do not use in places with a high humidity percentage like bathrooms or outside. **! Risk of injuries!**
- Do not attempt to operate the product if there is suspected damage to a cable, plug or power socket. **! Risk of electric shock, short-circuit and fire!**
- Do not leave heavy objects over the cable. **! Risk of electric shock, short-circuit and fire!**
- Do not position cable and plug close to heat sources or hot surfaces. **! Risk of fire, damages or injuries to people!**
- Do not submit the unit to high temperatures or humidity.
- Do not use at voltages other than those indicated.
- Assemble the product ensuring there is no risk of the cable being severed.
- Do not trample the cable or the remote control.

9. All Bunk beds / double decker beds / high beds:

Models including Tuckin bunk beds / Tuckin Loft Bed / Slumbersofa Duo, Cascade, Zig Zag, Z Beds, Pandora Etc.

ALL BUNK BEDS & HIGH BEDS

WARNINGS: All bunk beds / double decker beds / high beds European Standard EN 747-1:2012+A1:2015



SEE ALSO SPECIFIC WARNINGS FOR: (1) Tuckin Bunk Beds/Loft Beds; (2) Slumbersofa Duo (Twist Up and Lift Up versions); (3) Fixed Bunk Beds - BELOW

- **WARNING** High beds (above 600mm) and the upper bed of bunk beds must not be used by children under **6 years** due to the risk of injury from falls. It is for parents to assess the suitability of such a bed for their child.
- **WARNING** Bunk beds and high beds can present a serious risk of injury from strangulation if not used correctly. **Never attach or hang items to any part of the bunk bed that are not designed to be used with the bed**, for example (but not limited to) drawstrings, ropes, strings, cords, hooks, belts, and bags.
- **WARNING** Children can become trapped between the bed and the wall, a roof pitch, the ceiling, adjoining pieces of furniture (e.g. cupboards) etc. To avoid risk of serious injury, the distance between the upper safety barrier (guard) and the wall/adjoining structure must not be between 75mm and 230mm (the distance must be less than 75mm or more than 230mm). Place a freestanding bunk bed at a safe distance from the wall behind.
- Unless stated otherwise **bunk beds/stairs must be fixed to the wall at all times.**
- **WARNING** Do not use the bunk bed/high bed if any structural part is broken or missing.
- Different beds are accessed in different ways e.g. a ladder or a staircase with storage or drawers. Instructional diagrams regarding the positioning and connection of the means of access are shown in the manufacturer's instructions.
- Beds are not toys. Remember that children are at risk of injury from falling if they jump on beds as well as potentially damaging the structure of the bed itself. Allow only one child on the top bunk.
- The bed is ready for use just when the guard (barrier) is closed and the locking mechanisms have been locked in place.
- Guards (barriers) only work when they are closed and the locking mechanisms are tightened.
- Ladders can only be used when in position and the locking mechanisms are tightened.
- Recommended mattress size & maximum thickness are stated below according to the model.
IMPORTANT: NEVER use more than one mattress together.
- In the interests of maximum child safety, it is prohibited to use a mattress with a higher thickness than stated below or any line 'maximum height' marked on the side of the product.
- Ensure any ceiling fan or similar is not situated above or in reach of the top bunk. Don't place a bunk bed near a window or within two metres of a light fitting.

9.a. Tuckin Bunk Beds /Loft Beds (Murphy beds)

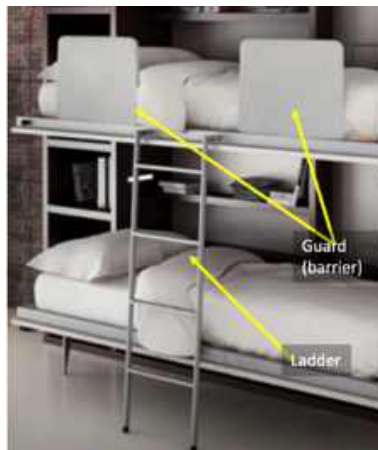
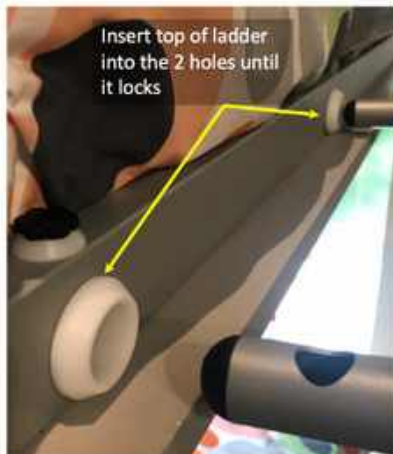
The top and bottom bunks can be operated independently as long as the ladder is always inserted and locked in position (see Warnings below) when the top bunk is open.

WARNINGS: Tuckin Bunk Beds/ Loft Beds SEE ALSO SPECIFIC WARNINGS FOR ALL BUNK BEDS AND ALL MURPHY BEDS ABOVE

CAUTION: The ladder is structural-it must be securely in place before using the top bed. Risk of injury without the ladder including from collapse or toppling over.



- Positioning and connection of ladder & guards (see pictures below):
 - Insert top of ladder into the 2 holes (at centre of top bunk) with safety lock engaged
 - Raise the top bunk guards (barriers) with the cover entirely pulled down



- To close, pull up stopper on safety lock to release ladder, and close guards (barriers) before closing bed.
- Recommended mattress size: length 2000 mm, width 900 mm, Maximum Thickness 180 mm. The mattress top must not pass the centre fold of the guard rails (the guard rails will fold 90 degrees).
- The bed comes with a lever on the left hand side (see picture above), when twisted this enables the top bunk to be lowered giving easy access to change the bedding. If this knob is continuously twisted it will disengage, therefore if you see the knob protruding please screw it tight again.
- After using the top bunk lever to change the bedding close the bed and re-open it and ensure it has locked firmly back into its standard operating position. This function should never be used whilst someone is in either bed.



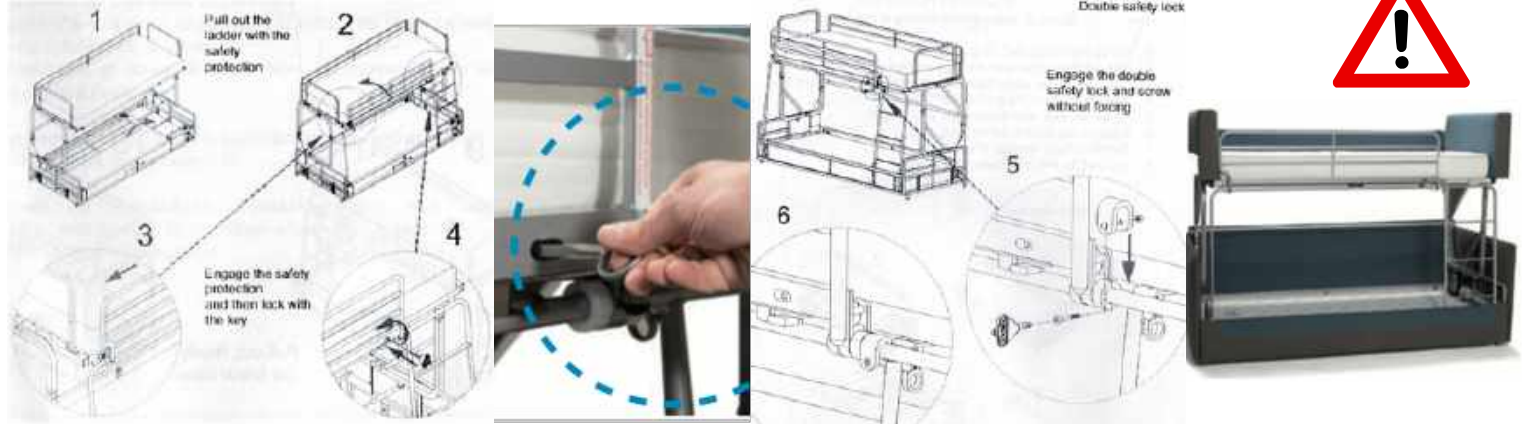
Where the bunk beds have a folding desk on the front and are fitted with locks (maybe with or without a key), the locks (example with key shown) should be kept locked whenever the bed is closed. When opening the desk ensure the desk supports are locked in the open position.



9.b. Slumbersofa Duo

WARNINGS: Slumbersofa Duo (lift up version) SEE ALSO SPECIFIC WARNINGS FOR ALL BUNK BEDS ABOVE

- Positioning and connection of ladder & guards (see diagrams below):
 - (1) lift up the seat/top bed. (2) From beneath lift out the ladder/guard rail 90degrees. (3) Fix the guard rail/ladder in place by pushing it up into place and shunting it to the left, with the guard (barrier) along the side of the top bed. (4) You must use the key to lock it. (5)(6) Double safety lock can then be engaged with screw provided. Finally pull up the lower bed.

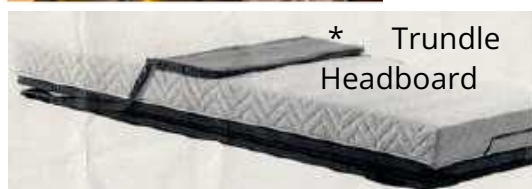


- Recommended mattress size: length 1900 mm, width 800mm, Maximum Thickness 150 mm. Do not go above any mattress reference line marked on the side of the product "Mattress Maximum Height".
- During opening and closing do not leave any blankets, pillows or other objects inside the mechanism.
- Always remove the supplied key to tighten the security lock and store it in a safe place out of reach of children.

9.c. Fixed Bunk Beds / Loft Beds (all models except Tuckin and Duo)

WARNINGS: Fixed Bunk Beds (all models except Tuckin and Duo) SEE ALSO SPECIFIC WARNINGS FOR ALL BUNK BEDS ABOVE

- The high sleeper/top bunk with ladder is ready for use just when the ladder and guard are in position and all locking mechanisms have been tightened.
- Positioning and connection of the means of access differs depending upon your ordered model e.g.:
 - Side stairs/storage stairs - position to the side leading to the opening in the guard (barrier);
 - Ladders - align above the special knobs / attachment points at the opening in the guard (barrier) with the red "keys" already inserted in applicable models (see picture below) push ladder down and slide the keys to lock (remove the keys). Pandora model does not have red keys.



- The guard (barrier) should be locked with the red "keys" in applicable models (example pictured above) but may be opened to change bedlinen.
- In spite of the use of castors, beds may leave marks and/or scratches on particularly delicate floors in parquet while being moved.
- Recommended mattress size:- See Mattress Size Chart below.
- Do not go above any line 'maximum height' marked on the side of the product.
- Underbed automatic trundle bed – do not open without mattress! Lift up using the headboard only*

9. d. Mattress Size Chart for Fixed Bunk Beds / Loft Beds

Recommended mattress size & maximum thickness are stated below according to the model.
IMPORTANT: NEVER use more than one mattress together.

Mattress Size Chart (CM) You must use the correct size mattress. If uncertain please ask.

Model	Compact Single	Single	Other Size
Pandora	80 x190 x18	90 x190 x18	-
Cascade	Top Bed T1, T2, T3 - 80 x200 x18 Middle Bed B1, B2, B3, B4 - 80 x190 x18	Top Bed T1, T2, T3 - 90 x200 x18 Middle Bed B1, B2, B3, B4 - 90 x190 x18	-
Cascade Low	-	Top Bed T4 - 90 x200 x18 Middle Bed B5, B6 - 90 x190 x18	Super Single: Top Bed T4 - 120 x200 x18 Middle Bed B5, B6 - 120 x190 x18
Emerge	80 x200 x18	90 x200 x18	Single +: 100 x200 x18 Super Single: 120 x200 x18
Zigzag	-	Top bed - 90 x200 x18 Middle Bed - 90 x190 x18	-
Sage	Bed B1, B2, B3, B4 - 80x190x18	Bed B1, B2, B3, B4, B5, B6 - 90x190x18	Bed B5, B6 - 120x190x18
Z, Boomerang	-	90 x200 x18	-
Trundle bed	80 x190 x16 (auto)	90 x190 x16 (auto) 90 x190 x18 (manual)	-

T1



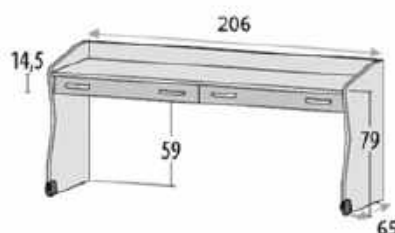
T3



T2



T4



B1 (bottom)



B2



B3



B4



B5 (bottom)



B6



10. Tables & Chairs (including Wall Mounted Tables)

Tables are designed for use for dining / as coffee tables and ancillary uses



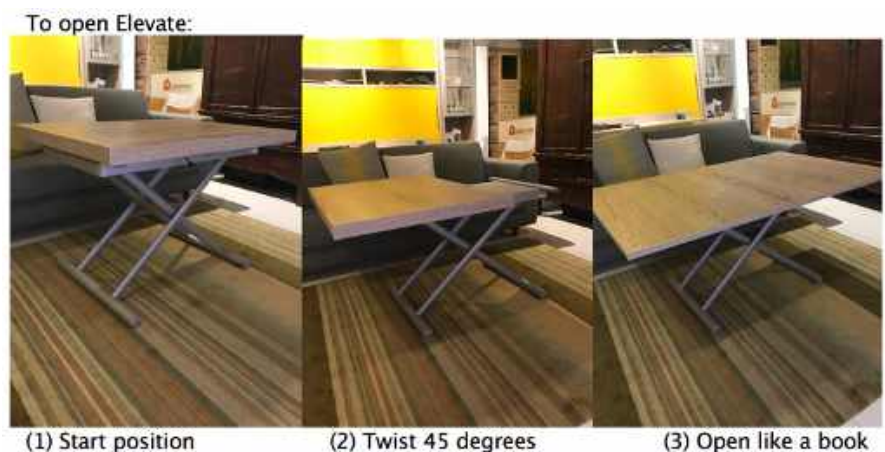
WARNINGS:

- Do not stand on the furniture or sit on the tables.
- To avoid overturning, do not load the tables excessively on the sides (in particular tables with a central support and on extended tables).
- When opening and closing and using the extensions of the table ensure you and no-one else is in danger of trapping hands or fingers.
- Tables must not be used or operated or played with by young children because of the risk of injury. It is for parents to take care of their child.
- The product has to be used on a flat, level surface and the weight evenly distributed on all legs. The condition of the floor will impact whether the table sits flat.
- Relocating the table requires proper lifting to avoid unbalancing the structure.
- For wall mounted tables make sure no-one is in front of the table when opening.
- Wall mounted tables require a concrete wall and use of the correct fixings.

TABLES

Models with extra set of legs e.g. Mammoth/other consoles, Armadillo/Boxster XL - when extending the table use the additional legs provided to ensure stability.

Elevate - DO NOT open before twisting the top - the table may become unstable and there is a risk of injury. When extending the table (which is hinged and opens like a book), you must turn the top 45 degrees BEFORE opening the extension.



CHAIRS

Indoor chairs have a weight limit of 80KG unless otherwise stated.

Folding chairs have a weight limit of 80KG unless otherwise stated.

Sit properly on chairs. Avoid standing or placing excessive weight on the backrest or arms, as this can lead to breakage or warping.

If your chairs are stackable, stack them carefully and avoid stacking them too high to prevent tipping.

Wall Mounted Tables

Flip - Flip opens in an upward direction.

Keep hands and limbs clear when releasing the locks to close the table.



Pic & Incognito (wall mounted table with picture or mirror)

This table must be held when opening or closing, do not let go of the table during the opening or closing process.



Artable

Unlock the table then simply pull the bottom of the table upwards and the pistons will assist to guide the movement.

Once the table is parallel with the floor unfold the legs and make sure they are well pushed out angled away from the wall. You might have to push the table up slightly to put the legs in position. To close reverse this process and use the lock to secure.



Do not use with a rug. The floor must be level.

Secret Table

1. Press the pull push button to open the front flap. Pull out the folded table until it clicks into position.
2. Pull out the metal legs beyond the folded table until fully extended.
3. Twist the red handle to allow the balancing leg to move 45 degrees and extend it fully towards the floor. It will click into place (see Round Button).
4. Once the leg is in place you may unfold the table. It must be completely unfolded. Start with the top panel and then use that unfolded panel to unfold the rest.
5. To close press the Round Button on each side to allow the leg to retract. Then reverse the steps above. In the last movement push in the red safety stopper on each side to push the folded table back into the unit.



Do not use with a rug. The floor must be level.

11. Sofa Beds

Do not drag the sofa over rough surfaces (carpets, wall-to-wall carpeting, etc.) and if the sofa has to be moved, it must be lifted and not pushed, even when on smooth surfaces.

Do not pull the sofa by the arm to avoid breaking stitches and wooden structures

WARNINGS:

- Do not sit on the edge of the bed frame (e.g. the unsupported foot end of the bed).
- Do not sit on the arms and/or the back. The armrests and tops of backrests are not intended to be used for seating. These structures are designed for their intended purpose only and may not bear excessive weight.
- Avoid jumping on the sofa or bed and do not throw yourself violently on it.
- Remove the bed sheets and blankets etc. before closing - do not close the mechanism with pillows, quilts or any objects etc. inside.
- If the sofa is equipped with a ratchet, lift the ratchet first and then open the bed-frame.
- Do not move the sofa bed when people are seated or objects on it. **! Risk of damage!**
- Do not put your hands or feet under the sofa bed, or in the space between the back cushions and the seat, while opening and closing the sofa bed. **! Risk of injury!**
- **Six Monthly Maintenance - Clean up the mechanism from dust and lubricate all mechanical joints with a silicone spray lubricant.**



Slumbersofa Dynamo (Electric sofa bed)

Operation:

Depress the on off button on the remote for 5 seconds until the red light switches off to unlock. Then press the up button to open the sofa bed. It only moves while the finger is on the button for safety – you can stop any time and decide to close the bed. Close by pressing the down button.

Lock the remote by pressing the on off button for five seconds until the red light comes on again.



IMPORTANT: In case of motor fault, it is possible to disconnect the motor and operate the sofa bed manually – contact Spaceman for help.



IMPORTANT: FOR WARRANTY COVERAGE:

1) The mechanism must be accompanied by the warranty adhesive label indicating month and year of production.

2) Damage due to transportation is excluded.

3) It must be proven that the breakage of the mechanism is due to production defect and not to improper use and in particular:

- Do not leave blankets and pillows within the mechanism when closing the sofa bed (this could damage the unit);
- Do not use a mattress which does not fit the established parameters (height, width, length)

Slumbersofa Dynamo (Electric sofa bed)

MAXIMUM WARNING



- In case of failure or malfunction of the device, stop use immediately, unplug and consult Spaceman. ! **Danger of fire, short-circuit or electric shock!**
- Do not operate the sofa bed, use the remote control and/or unplug the unit with wet hands. ! **Danger of electric shock or injury!**
- Never disassemble the device or modify it. ! **Danger of fire or injury!**
- Before operating the sofa bed, ensure there are no people, animals or objects within the opening/closing area of the bed. ! **Risk of injuries or damage!**
- Do not allow children to operate or play with the sofa bed and the remote control. ! **Risk of injury!**
- People with severe disability should take extreme care or operate only with supervision. ! **Risk of injury!**

ELETRICAL PRECAUTIONS

- Ensure the plug is inserted completely into the power socket. ! **Risk of short-circuit and/ or fire!**
- When removing plug from power socket, ensure the plug is handled. Do not unplug by pulling the cable. ! **Risk of short-circuit, electric shock or fire!**
- In case of interruption of power, switch off the device and unplug it. ! **Risk of fire!**



Slumbersofa Dynamo (Electric sofa bed)

WARNING PRECAUTIONS FOR USERS

- Do not operate the sofa bed wearing wet garment. **! Risk of injuries or electric shocks!**
- Do not use the sofa bed if wet. **! Risk of injuries or electric shocks!**
- Do not use with a different voltage from what is indicated in the label and do not insert the plug in multiple converters. **! Risk of fire or short-circuit!**
- Do not use in places with a high humidity percentage like bathrooms or outside. **! Risk of injuries!**
- Do not sit, jump or stay on the headboard, back cushions or arms of the sofa bed. **! Risk of injuries and damages for the device!**
- Do not attempt to operate the sofa bed if there is suspected damage to a cable, plug or power socket. **! Risk of electric shock, short-circuit and fire!**
- Do not leave heavy objects over the cable. **! Risk of electric shock, short-circuit and fire!**
- Do not position the sofa bed close to ovens/stoves or any other heat source. **!Risk of fire or damages!**
- Do not position cable and plug close to heat sources or hot surfaces. **! Risk of fire, damages or injuries to people!**



ATTENTION: WARNING

- Use in domestic areas only.
- Do not submit the unit to high temperatures or humidity.
- Do not use for purposes other than those stated in the manual.
- Do not use at voltages other than those indicated in the manual.
- Assemble the sofa bed ensuring there is no risk of the cable being severed.



POSITIONING ADVICE

- Position the sofa bed away from sources of heat.
- Do not use in rooms with high humidity percentage (bathrooms) and everywhere there's a risk of getting the motor wet. **! Risk of fire or short-circuit!**

AREAS AND PRECAUTIONS TO OPEN AND CLOSE THE SOFA BED

- Ensure there are no children, other people, animals or objects within the operational area of the sofa bed **! Risk of injury for people or damages to objects!**
- Do not trample the cable or the remote control.

12. Storage Beds

WARNINGS:

If your bed does not lift or lower smoothly, e.g. if the bed feels it is heavier than usual or getting heavier
Do Not Force Operation: stop immediately and:



1. check for obstructions;
2. check for damage to the lifting pistons (look for any signs of damage, leaks, or loss of pressure in the pistons).

If the pistons seem faulty or broken, contact Spaceman for assistance.

Important – do not lean into the bed in these circumstances, if the piston is not operating properly there is a risk of trapping part of your body and so a risk of serious injury e.g. if you are underneath the bed leaning inside the storage area.

Do not operate the bed without a mattress - the pistons are calibrated for mattress weight - risk of injury.

Important:

- The lifting pistons create pressure during operation. Never place your hands, fingers, or other objects near the piston arms or lifting mechanism while the bed is being moved.
- Do not exceed the weight limit of the lifting pistons as per the tables below. Overloading the bed can damage the pistons or the bed frame, and may cause injury. Adjustable option can be used if purchased.
- Ensure the bed is on a flat, stable surface. If the floor is uneven, the lifting mechanism may not operate smoothly and could cause damage.
- Do not drag the bed by the headboard since you may dislodge it from the bed.
- If your mattress is higher than 22cm, please inform us prior to delivery so the headboard can be set at the correct height during installation. Maximum mattress height allowed is 30cm.

Operation:

1. **Easy Lift:** To raise grasp the lift handle pictured firmly and apply steady pressure upwards. Lift the bed base / mattress slowly and evenly. The pistons will help to raise to the final position where it will be static. The bed stays automatically in the open position ("Open Position").

2. Check the stability of the raised bed base/mattress before using the storage space underneath .

3. To lower, ensure the area is clear of obstructions around the bed. Stand at the foot of the bed and push the bed base itself down to lower it (allowing the pistons to assist in lowering the bed). Grasp the lift handle to gently guide into the closed position and avoid damage to the pistons or frame. Ensure the bed is completely lowered and secure before using – it will rest on the plates shown.

4. In the **Dual Lift** model there is an additional bed position to Easy Lift. After opening as above, from the Open Position you may pull the bed base back towards you, bringing the bed base and mattress parallel to the bed/floor (see picture). This position allows access to the storage near the bed head, and a comfortable position to make the bed. To close push the bed base back towards the bed head where it will return to the Open Position. Then close as stated above.



Weight limit of the lifting pistons

Easy Lift Bed Size	Min-Max weight
90cm (Single)	10 - 14KG
120cm (Super Single)	20 - 34KG
135 – 160 (inc Double 140, Queen 160)	20 - 45KG
180 (King)	25 - 48KG
Other King	30 - 52KG

Dual Lift - Bed Size	Min-Max weight
90cm (Single)	10 - 15KG
120-135cm (Inc Super Single 120)	15 - 21KG
140 – 160 (inc Double 140, Queen 160)	34 - 39KG
180 (King)	40 - 45KG

Storage area

Ensure weight is evenly distributed across the storage area. Avoid overloading – the weight limit is 120KG (for king size). Do not overfill – see limit on picture of the bed plate.

Keep the storage area clean and dry. Open the dust free system by pulling the handle pictured. Operate this smoothly and slowly. Close the dust free system by pushing back the plastic slats slowly until fully closed.



13. Outdoor Tables & Chairs

Metal range: If at the seaside clean the surfaces every 3 months with mild detergent and apply a protective layer of Vaseline oil.

IMPORTANT do not leave waterproof synthetic table cloths over the table tops for long periods as condensation between the surfaces can damage the paint.

Metal - Store products during *winter season in a closed environment to prevent condensation.

If your chairs are stackable, stack them carefully and avoid stacking them too high to prevent tipping.

*meaning European winter

14. Paper products

At first use paper products will be hard to open, especially benches – and will have strong rebound resilience. They must be stretched into normal use – for benches, sofas etc. with 2 persons, each hold a side panel and fully stretch it for a few seconds then allow to get smaller slowly in a controlled way without letting go. Repeat this action several times to reduce its resilience.



WARNING: when releasing a stretched paper product it could close quickly and unexpectedly, creating a risk of injury.

Opening will become easier over time. Indentations in the paper are normal. Use the cushions provided for comfort and to minimise indentations. Products are water resistant for normal indoor use only. Do not soak them in water or put them outside on a rainy day.

15. Mattresses

Our mattresses are designed for use with our products. Whilst you are not obliged to use our mattress if you choose to use your own you should be aware it may affect the operation, safety and any warranty on the product.

IMPORTANT: ensure your mattress is within the maximum/minimum dimensions AND weight stipulated by Spaceman, size information is stated above for bunk beds, and for other products is available upon request. For Murphy Beds you can see the sizes on the data sheet for most models.

Contact Spaceman for cleaning instructions.